



Winterizing your 10.2 Wet Bath Camper (Truma w/all Batteries)

To maintain your campers plumbing and fixtures, you will need to winterize the camper during temperatures that approach freezing. The camper can be used in freezing conditions, by maintaining a constant heat source, from either the electric source or LP gas, or in the mixed mode.

However, if not using the water, or putting the camper into storage, the water system needs to be attended to as explained in the instruction below.

Items you will require

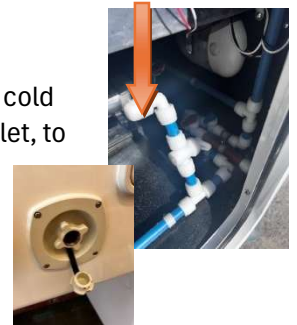
- *RV Potable Non-toxic Anti-Freeze*
- *Anti-freeze pick-up line supplied with your camper*
- *Battery or shore power to energize your water pump.*

Steps to Winterize your 10.2 Wet Bath Camper with the Truma Combi Comfort.

1. Locate the Fresh Water Tank Drain Valve, which will be in the service compartment behind the termination valve door, located at the rear roadside corner of the camper. Open this valve (handle aligned with the tubing) to drain the water tank.



2. Open the Cold Low Point Drain (the handle should be aligned with the piping). Opening a cold faucet or two will speed up this process. Also remove the dust cap from the City Water Inlet, to allow air to enter. This will ensure that water will drain from the Shurflo Regulator that is built into this inlet. Once water stops draining close the valve (handle across the drain line) and replace the cap on the City Water Inlet.



Note: Your camper may be equipped with a City Water inlet (Round Shape) that does not include a regulator. This City Water inlet will require attention after the camper has been winterized with anti-freeze (procedure is listed in item 12)



3. Open the Hot Low Point Drain (the handle should be aligned with the red tubing). Open the hot faucets in your kitchen and bath, to speed up this process. Once water stops draining, close the handle (the handle should be positioned across the pipe).



4. In the same service compartment, you will find the Rear of the camper is the Water pump/fresh water supply shut off valve and the Antifreeze pickup port and shut off valve. Close the fresh water supply valve, which runs to the pump. (this handle should be across the piping to close the valve)



5. Unscrew the cap to the anti-freeze pickup port, locate the anti-freeze pickup fitting/hose (supplied loose with your camper) and thread the assembly onto the thread you exposed when removing the cap

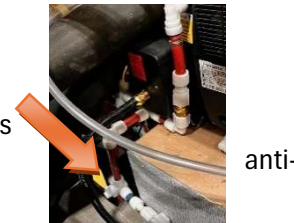


6. Open the Anti-Freeze Pick-up Valve which will then allow anti-freeze to be drawn into the water pump and distributed to the camper's water system. To allow the pump to draw anti-freeze, the handle must be aligned with the vertical pipe.



7. Ensure that the water heater is turned off from all sources at the CP Plus Control.

8. In the forward facing dinette seat, you will see the By-Pass valve for the Truma Combi. This handle should be aligned with the vertical tubing for winterization. This will prevent the freeze from entering the Combi reservoir.

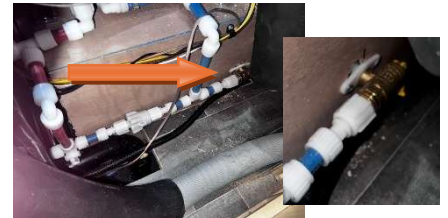


9. Open the pressure relief valve to empty the Truma Combi reservoir. This water will exit the Combi through the drain tube on the roadside of the camper.



WARNING! The water in the Combi is HOT (162°F/ 72°C), and scalding can occur. Make sure that no one is directly in front of the Combi Discharge hose on the exterior of the camper, when draining the Combi.

It's a good idea to place a bucket beneath this exterior drain. You should collect 2.64 US Gallons or 10 litres of water. If you do not collect this amount, you still will have water in your Combi. Open the Brass Pressure Relief Valve by flipping the Lever 90 degrees to Drain the Water from the Combi into your bucket.



Combi Information: When storing your camper for the winter, or when traveling in temperatures below 40° F/4.5°C and you don't intend on using water, your Combi needs to be winterized. It is perfectly acceptable to use you Truma Combi for heat and hot water during freezing conditions. But it's important to remember that the Truma Combi does not feature frost protection. So, the water container of the Combi must be drained if the Camper is not being used, when there is a risk of frost.



Combi Information: Note it is acceptable to run your Combi for Heat with the water container of the Combi drained. This will allow you to heat your camper without concerns about water being in the Truma Combi.



Warning! If your camper is equipped with the Optional Inverter package, you should **not** travel with the Combi set to be **powered on the Electric Mode**. This mode will cause the Combi to run off the inverter and draw up to 1700 watts of power. This large load will discharge your batteries to a level where it would be difficult for the DC/DC charger to keep up with the rate of discharge. Which could cause you to arrive at your destination with only a partially charged battery bank. It is acceptable to run your Combi in Mixed Mode1 (850watt) or preferably on Gas Mode, to allow your battery bank to charge efficiently, off the DC/DC charger.

10. To winterize the waterlines of the camper you will need a gallon of potable water antifreeze. Place the end of the anti-freeze pickup tube into the gallon. Turn on the water pump, and open the cold faucets in the galley, bathroom, and outside shower until the pink anti-freeze exits the faucet. Also run your shower till anti-freeze appears, this will protect the divertor. Flush the toilet to allow anti-freeze to winterize the valve and enter the bowl.

11. Repeat item 10 for all hot water faucets, as well

12. Once completed, **turn off the pump**, exit the camper and locate the city water inlet. If your camper has a Round City Water (B&B) inlet, you'll need to remove the cap, and then carefully remove the conical filter screen avoiding damage to the rubber washer. Standing aside of the city water connection, use a pen or similar item and depress the check valve pin in the fitting. Pink Anti-Freeze will shoot out, winterizing the water fill. (if you have a rounded square inlet (Shurflo), you will not have to perform this procedure.)



13. Although Anti-Freeze did make its way into the P-Traps by running the faucets, it is advisable to add about 1 cup of Anti-Freeze to each P-Trap at the Galley, Vanity and Shower locations.

14. This should completely winterize the plumbing fixtures/tubing and appliances in your 10.2 Wet Bath Camper.