



Winterizing your 10.2 Dry Bath Camper (Suburban)

To maintain your campers plumbing and fixtures, you will need to winterize the camper when temperatures approach freezing. The camper can be used in freezing conditions, by maintaining a constant heat source, from either the electric source or LP gas, or in the mixed mode.

However, if not using the water, or putting the camper into storage, the water system needs to be attended to as explained in the instruction below.

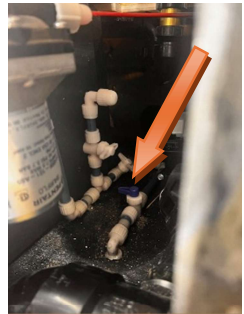
Items you will require

- *RV Potable Non-toxic Anti-Freeze*
- *Anti-freeze pick-up line supplied with your camper*
- *Battery or shore power to energize your water pump.*

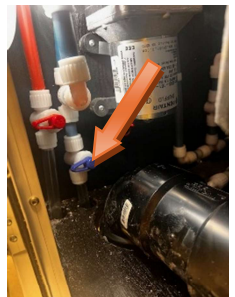
Steps to Winterize your 10.2 Dry Camper with the Suburban Water Heater

1. Locate the Fresh Water Tank Drain Valve, which will be in the service compartment behind the termination valve door, located at the rear roadside corner of the camper. Open this valve (handle aligned with the tubing) to drain the water tank.

Note: once you've opened your Cold and Hot low point drains (item 2 and 3 below) you can use the water pump to speed up the draining of the water tank.



2. Open the Cold Low Point Drain located in the termination compartment (the handle should be aligned with the piping). Also locate the City Water Inlet on the roadside exterior wall and remove the dust cap from the City Water Inlet, to allow air to enter. This will ensure that water will drain from the Shurflo Regulator that is built into this inlet. Once water stops draining close the valve (handle across the drain line) and replace the cap on the City Water Inlet.



Note: Your camper may be equipped with a City Water inlet (Round Shape) that does not include a regulator. This City Water inlet will require attention after the camper has been winterized with anti-freeze (procedure is listed in item 13)



3. Open the Hot Low Point Drain "?" (the handle should be aligned with the piping). Open the hot faucets in your kitchen and bath, to speed up this process. Once water stops draining, close the handle (the handle should be positioned across the pipe).



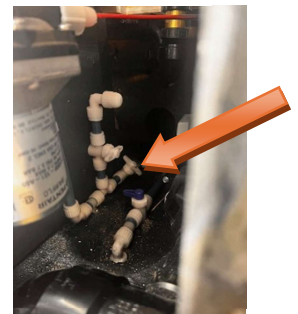
4. Ensure that the water heater is turned off from all sources, and that the water has a chance to cool down. With the pump off, Open a hot water faucet briefly to reduce the pressure in the hot water system. Exit the camper and locate the water heater on the front roadside of the camper. Open the water heater access door. Locate the Pressure Relief valve at the top of the water heater recess. Opening the pressure relief valve lever will speed up this process by allowing air into the tank. You'll then need to remove the anode rod at the bottom of the recess, to drain water that is in the water heater tank. This anode is removed using a 1 1/16" (27mm) wrench turning the anode Hex head counter-clockwise.



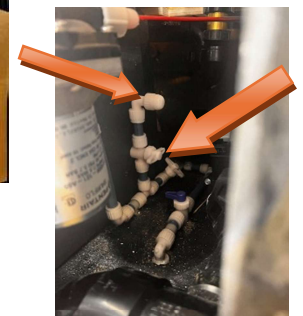
- 5.
6. Inspect the Anode Rod once you've removed it to see if it needs replacing. Your water heater uses this sacrificial anode rod in the tank, which is made of a more reactive material than the steel of the tank. It sacrifices itself to protect the tank by attracting minerals and corrosive elements in the water. Check the anode rod at least once per year and replace if significantly deteriorating, preventing tank corrosion, and causing odor when using hot water, (see photo of a new and corroded anode rod.) (right). The amount or rate of corrosion will vary depending on the mineral content of the fresh water supply.



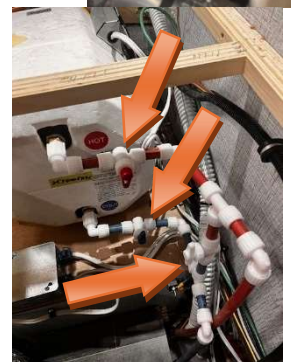
7. In the termination compartment you will find the Water pump/fresh water supply shut off valve and the Antifreeze pickup port and shut off valve. Close the fresh water supply valve, which runs to the pump. (this handle should be across the piping to close the valve)



8. Unscrew the cap to the anti-freeze pickup port (?), locate the anti-freeze pickup fitting/hose (supplied loose with your camper) and thread the assembly onto the thread you exposed when removing the cap. Open the anti-freeze pickup valve (handle aligned with the tubing).



9. To bypass the water heater, the Blue Valve handle should be across the tubing, the red handle valve should be across the tubing, and the white valve handle on the bypass line should be inline with the tubing. This allows anti-freeze to enter the water system without filling the water heater with anti-freeze (which would require 6 gallons).



10. To winterize the waterlines of the camper you will need a gallon of potable water antifreeze. Place the end of the anti-freeze pickup tube into the gallon. Turn on the water pump, and open the cold faucets in the galley, bathroom, and outside shower until the pink anti-freeze exits the faucet. Also run your shower till anti-freeze appears, this will protect the diverter.
11. Repeat item 9 for all hot water faucets, as well

12. Flush the toilet to allow anti-freeze to enter the bowl.
13. Once completed, **turn off the pump**, exit the camper and locate the city water inlet. If your camper has a Round City Water (B&B) inlet, you'll need to remove the cap, and then carefully remove the conical filter screen avoiding damage to the rubber washer. Standing aside of the city water connection, use a pen or similar item and depress the check valve pin in the fitting. Pink Anti-Freeze will shoot out, winterizing the water fill. (if you have a rounded square inlet (Shurflo), you will not have to perform this procedure.)



NOTE: DO NOT complete this operation with the pump on. The pump pressure can blow off the O-Rings in the valve, causing the valve to fail, and require it to be replaced.

14. Although Anti-Freeze did make its way into the P-Traps by running the faucets, it is advisable to add about 1 cup of Anti-Freeze to each P-Trap at the Galley, Vanity and Shower locations.
15. Ensure that you've emptied your grey and black holding tanks of any water that may have entered the tank during winterization.
16. This completes winterizing the plumbing fixtures/tubing and appliances in your 10.2 Dry Bath Camper.