



Mobile Power Solutions

## **OVER THE AIR UPDATE GUIDE – STEPS**

Learn how to set up over-the-air updates on your battery manager.

### **TABLE OF CONTENTS**

Before you get started - 2

Starting the Update - 3-4

Connecting to Your Wifi Network - 5-6

Running The Update - 7-8

Resetting to Factory Firmware - 9

201 - 710 Redbrick St, Victoria, BC V8T 5J3

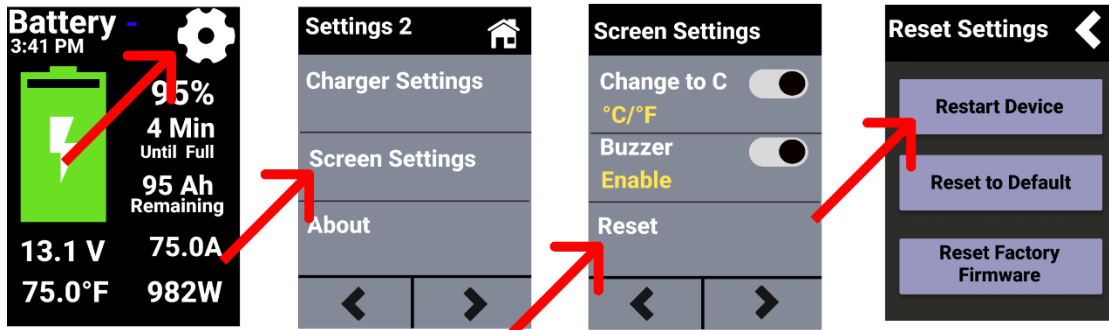
Toll-free: 1.866.247.6527 | Fax: 1.866.607.6527 | Web: [gopowersolar.com](http://gopowersolar.com)



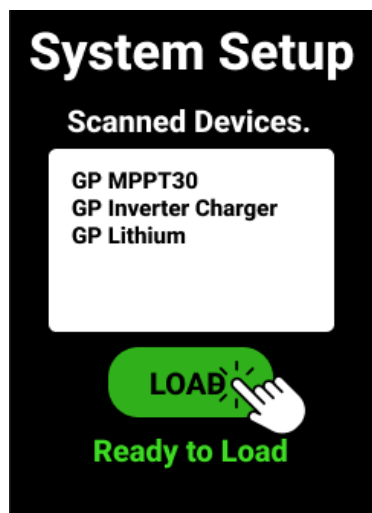
Mobile Power Solutions

## BEFORE YOU GET STARTED

1. When setting up new devices or adding new devices to the system, unplug the screen from the connected cable, or reset the screen via the screen settings. The screen will reset and show available devices.



2. If you have brand new and unconfigured ADV-Lithium Batteries, the "Battery Setup" screen will appear after a Display power reset to help set up your battery bank information. Select parallel or series, then click Start. The display will auto-configure the selected setup without the need to access the batteries via the Go Power! app.
3. The connected devices will begin loading and listed on the display.
4. PLEASE WAIT UNTIL ALL DEVICES ARE CONNECTED BEFORE PRESSING LOAD.  
Failure to do so only loads the items on the screen shown.
5. Ensure Bluetooth and location are enabled before reconnecting to the display via the Go Power! connect app. You can turn off your WiFi or Hotspot after the OTA process.
6. After the display has been updated, press "Load" once all Go Power! devices have been connected and shown on the "system setup" screen.



201 - 710 Redbrick St, Victoria, BC V8T 5J3

Toll-free: 1.866.247.6527 | Fax: 1.866.607.6527 | Web: [gopowersolar.com](http://gopowersolar.com)



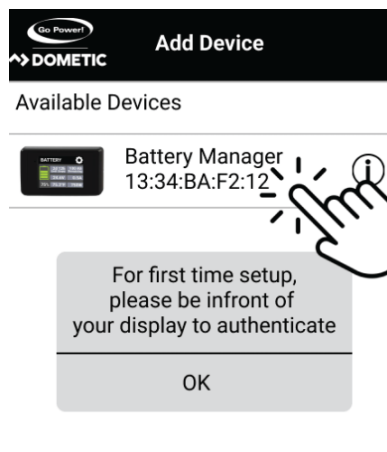
Mobile Power Solutions

## STARTING THE UPDATE

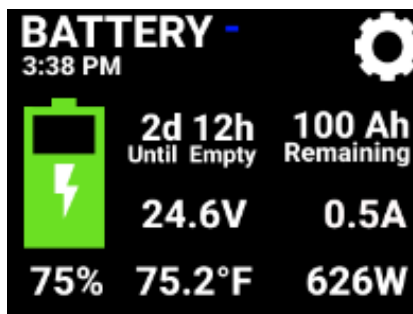
Before issuing an update, verify that you have:

- ✓ A 2.4GHz Wi-Fi network (A 2.4GHz Hotspot from your phone will also work.)
- ✓ Your Display's power source is not low (to avoid any power disconnects during the update process).

- 1) Open the Go Power Connect! App and connect to your display,
  - a) Open the Go Power Connect! App, select the plus icon on the top right.
  - b) On the "Add device" screen select the display



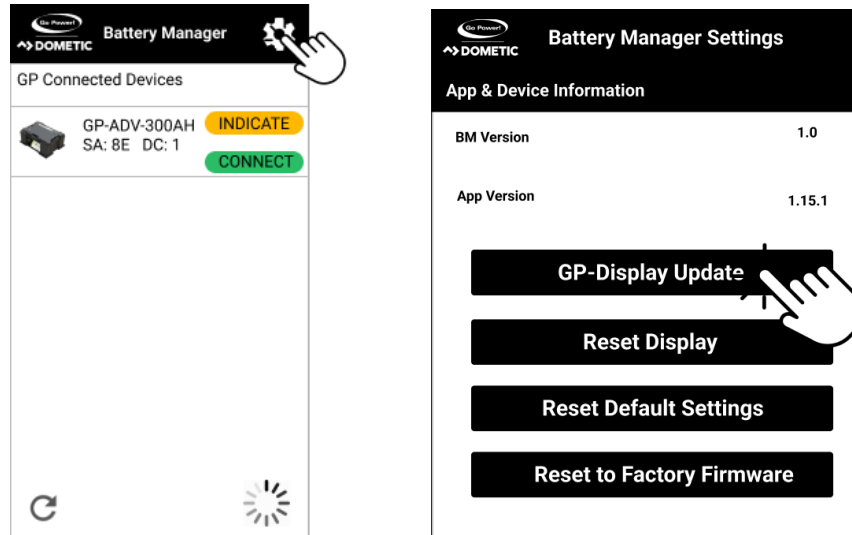
- 2) Please ensure the display is on the Main Screen and your device is connected by the blue "-" indicator



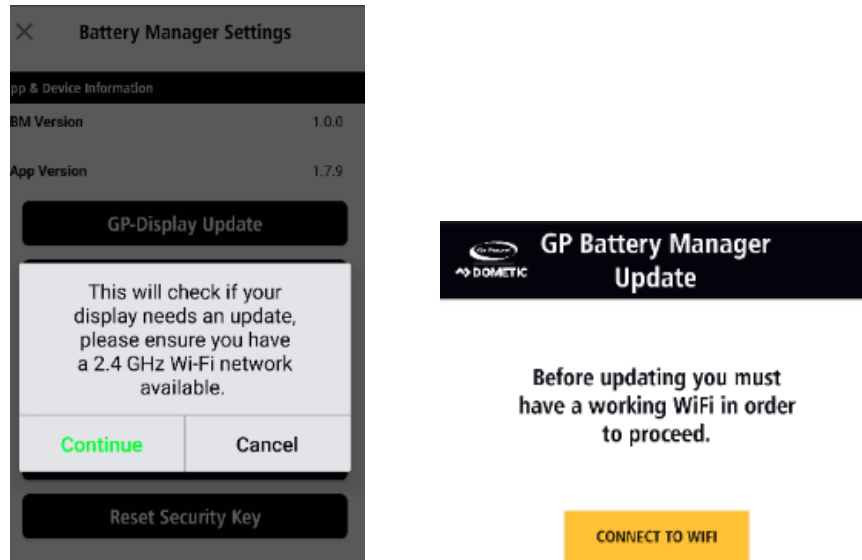
201 - 710 Redbrick St, Victoria, BC V8T 5J3

Toll-free: 1.866.247.6527 | Fax: 1.866.607.6527 | Web: [gopowersolar.com](http://gopowersolar.com)

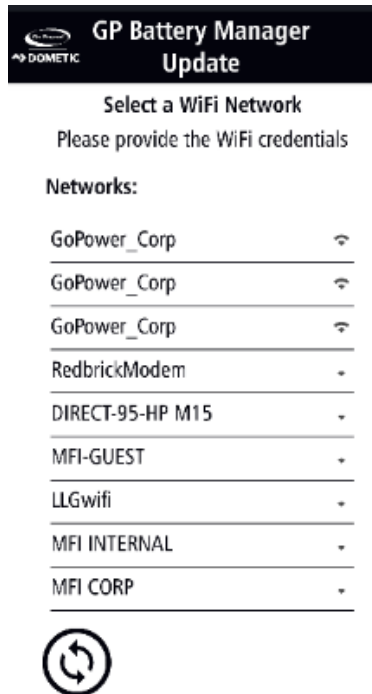
3) Once connected, click the top right settings cog and select the "GP-Display Update"



4) Click "GP-Display Update" This will lead you to the update screen, followed by "Connect to Wifi"



- 5) Select the Wi-Fi network you wish to connect to, if you do not see your Wi-Fi network, re-scan by selecting the “refresh” icon on the bottom left.



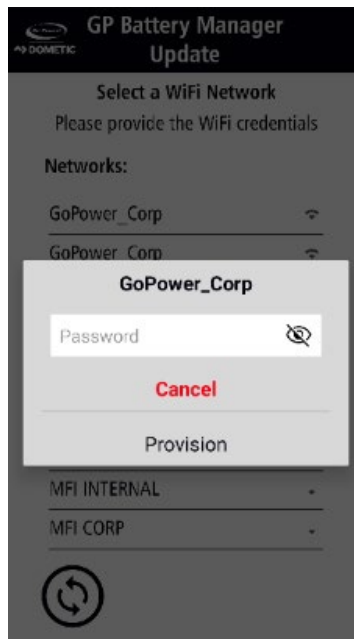
- a) Note: If using a hotspot, ensure your phone's name does not have any special characters. For Iphone users, remove the apostrophe. Additional characters should also be removed ( ' , ? , " , \$ , [ , \ , ] , and + ).
- b) Note: Iphone users must toggle the "Maximize Compatibility" for the display to connect to their hotspot.



Mobile Power Solutions



6) Ensure the WiFi password is entered correctly



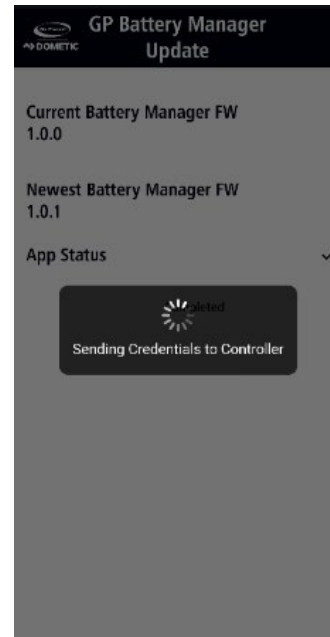
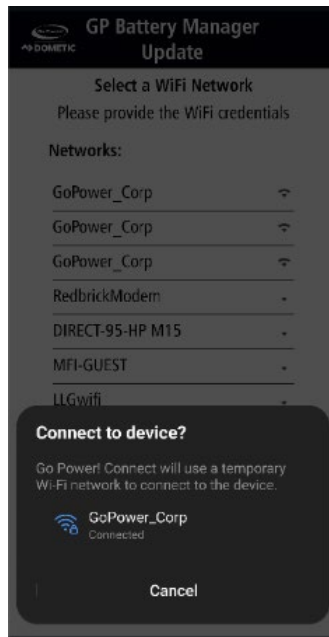
(a) For Android users an additional pop may occur, select the Wi-Fi network you have indicated on the app on the pop-up.

201 - 710 Redbrick St, Victoria, BC V8T 5J3

Toll-free: 1.866.247.6527 | Fax: 1.866.607.6527 | Web: [gopowersolar.com](http://gopowersolar.com)



Mobile Power Solutions



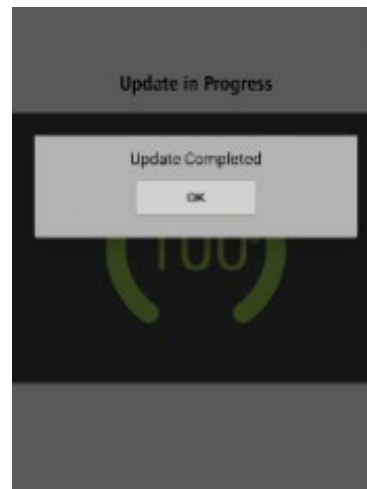
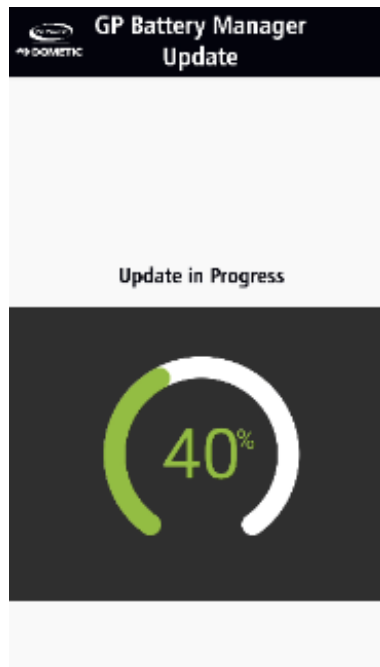
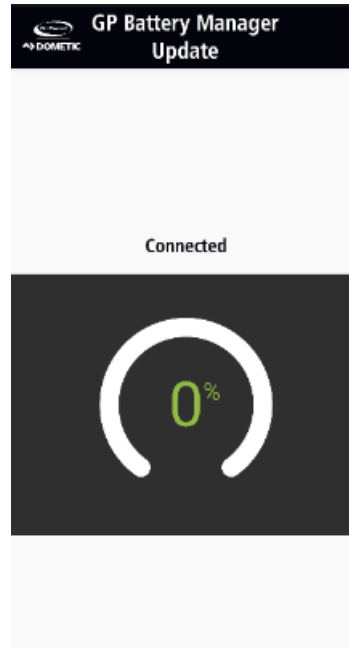
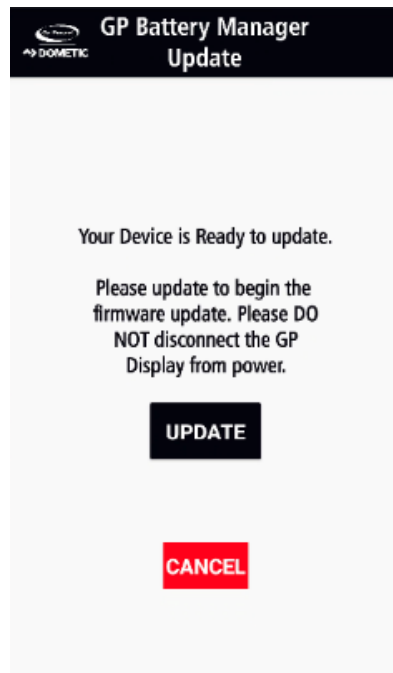
- 7) Press the update button on the next screen. The update process will now begin. Do not exit the app or turn off the phone.

201 - 710 Redbrick St, Victoria, BC V8T 5J3

Toll-free: 1.866.247.6527 | Fax: 1.866.607.6527 | Web: [gopowersolar.com](http://gopowersolar.com)



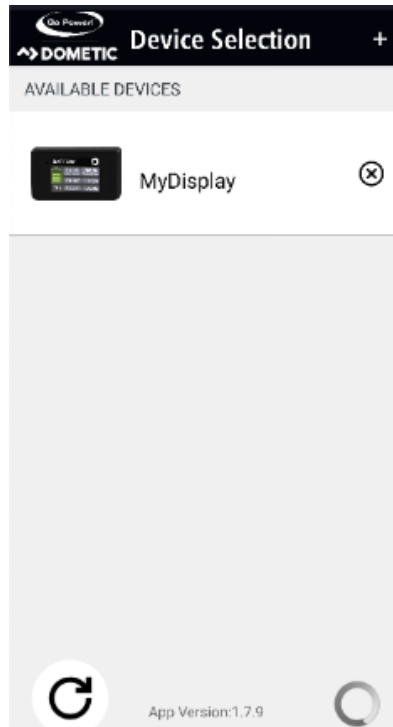
Mobile Power Solutions



201 - 710 Redbrick St, Victoria, BC V8T 5J3

Toll-free: 1.866.247.6527 | Fax: 1.866.607.6527 | Web: [gopowersolar.com](http://gopowersolar.com)

- 8) Your Display is now updated to the latest version! Return to the “Device selection” by pressing “OK”. The display will restart, double check that your Display has booted up successfully to the main screen before reconnecting.



**END OF UPDATE**

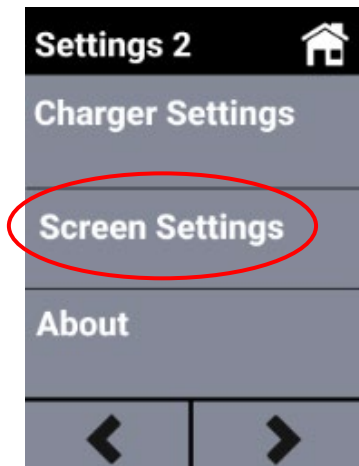


Mobile Power Solutions

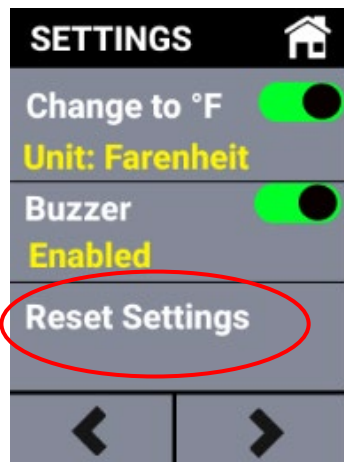
## RESETTING TO FACTORY FIRMWARE

9) If you're unsatisfied with the latest update, you can revert to the original factory firmware.

a) Go to "Screen Settings"



b) Go to "Reset Settings"



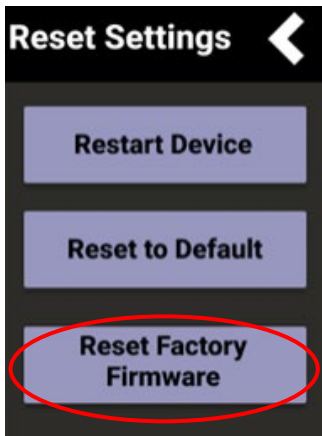
c) Go to "Reset Factory Firmware"

201 - 710 Redbrick St, Victoria, BC V8T 5J3

Toll-free: 1.866.247.6527 | Fax: 1.866.607.6527 | Web: [gopowersolar.com](http://gopowersolar.com)



Mobile Power Solutions



201 - 710 Redbrick St, Victoria, BC V8T 5J3

Toll-free: 1.866.247.6527 | Fax: 1.866.607.6527 | Web: [gopowersolar.com](http://gopowersolar.com)