



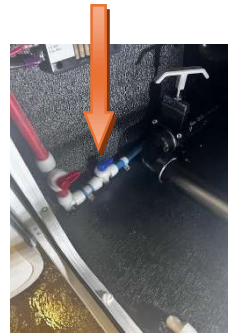
Winterizing your 8.11 Wet Bath Camper

To maintain your campers plumbing and fixtures, you will need to winterize the camper during temperatures the approach freezing. The camper can be used in freezing conditions, by maintaining a constant heat source, from either the electric source or LP gas, or in the mixed mode.

However, if not using the water, or putting the camper into storage, the water system needs to be attended to as explained in the instruction below.

Steps to Winterize your 8.11 Camper with the Truma Combi Comfort

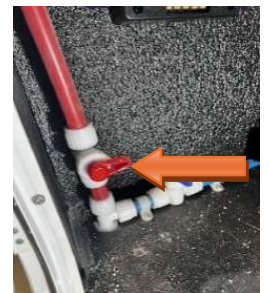
1. Locate the Fresh Water Tank Drain Valve, which will be in the service compartment behind the termination valve door, located at the rear roadside corner of the camper. Open this valve (handle aligned with the tubing) to drain the water tank.



2. Open the Cold Low Point Drain "?" (the handle should be aligned with the piping). Opening a cold faucet or two will speed up this process. Once water stops draining close the valve (handle across the drain line)



3. Open the Hot Low Point Drain "?" (the handle should be aligned with the piping). Open the hot faucets in your kitchen and bath, to speed up this process. Once water stops draining, close the handle (the handle should be positioned across the pipe).



4. Remove the Lid to the rear dinette seat to expose the Truma Combi Comfort Plus. Behind the Combi towards the Rear of the camper is the Water pump/fresh water supply shut off valve and the Antifreeze pickup port and shut off valve.

Close the fresh water supply valve, which runs to the pump. (this handle should be across the piping to close the valve)



The water supply valve and the Anti-Freeze pickup are not readily accessible. To provide more working space, the duct coming off the Truma combi, can be detached to provide more access.

5. Unscrew the cap to the anti-freeze pickup port (?), locate the anti-freeze pickup fitting/hose (supplied loose with your camper) and thread the assembly onto the thread you exposed when removing the cap

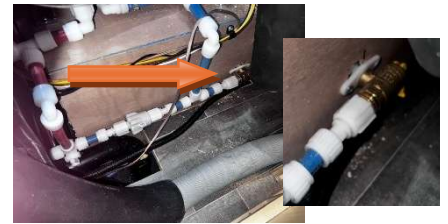


6. Ensure that the water heater is turned off from all sources at the CP Plus Control.



WARNING! The water in the Combi is HOT (162°F/ 72°C), and scalding can occur. Make sure that no one is directly in front of the Combi Discharge hose on the exterior of the camper, when draining the Combi.

It's a good idea to place a bucket beneath this exterior drain. You should collect 2.64 US Gallons or 10 litres of water. If you do not collect this amount, you still will have water in your Combi. Open the Brass Pressure Relief Valve by flipping the Lever 90 degrees to Drain the Water from the Combi into your bucket.



Combi Information: When storing your camper for the winter, or when traveling in temperatures below 40° F/4.5°C and you don't intend on using water, your Combi needs to be winterized. It is perfectly acceptable to use you Truma Combi for heat and hot water during freezing conditions. But it's important to remember that the Truma Combi does not feature frost protection. So, the water container of the Combi must be drained if the Camper is not being used, when there is a risk of frost.



Combi Information: Note it is acceptable to run your Combi for Heat with the water container of the Combi drained. This will allow you to heat your camper without concerns about water being in the Truma Combi.



Warning! If your camper is equipped with the Optional Inverter package, you should **not** travel with the Combi set to be **powered on the Electric Mode**. This mode will cause the Combi to run off the inverter and draw up to 1700 watts of power. This large load will discharge your batteries to a level where it would be difficult for the DC/DC charger to keep up with the rate of discharge. Which could cause you to arrive at your destination with only a partially charged battery bank. It is acceptable to run your Combi in Mixed Mode1 (850watt) or preferably on Gas Mode, to allow your battery bank to charge efficiently, off the DC/DC charger.

7. To winterize the waterlines of the camper you will need a gallon of potable water antifreeze. Place the end of the anti-freeze pickup tube into the gallon. Turn on the water pump, and open the cold faucets in the galley, bathroom, and outside shower until the pink anti-freeze exits the faucet. Also run your shower till anti-freeze appears, this will protect the diverter.
8. Repeat item 8 for all hot water faucets, as well
9. Flush the toilet to allow anti-freeze to enter the bowl.
10. Once completed, turn off the pump, and exit the camper. Proceed to the city water connection, remove the cap, and then carefully remove the conical filter screen avoiding damage to the rubber washer. Standing aside of the city water connection, use a pen or similar and depress the check valve in the fitting. Pink Anti-Freeze will shoot out, winterizing the water fill.



NOTE: DO NOT complete this operation with the pump on. The pump pressure can blow off the O-Rings in the valve, causing the valve to fail, and require it to be replaced.

11. Although Anti-Freeze did make its way into the P-Traps by running the faucets, it is advisable to add about 1 cup of Anti-Freeze to each P-Trap at the Galley, Vanity and Shower locations.
12. This should completely winterize the plumbing fixtures/tubing and appliances in your 8.11 Wet Bath Camper