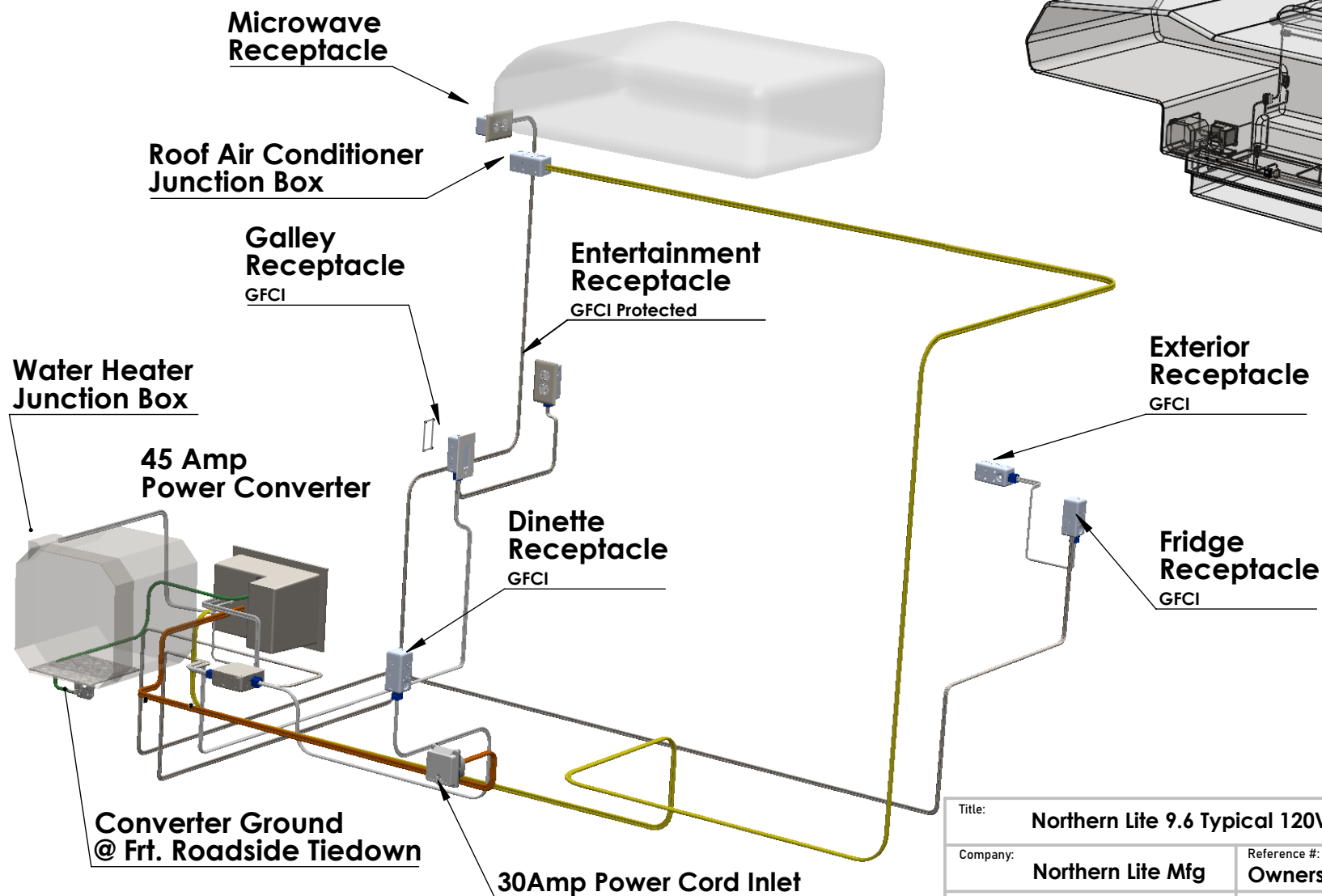
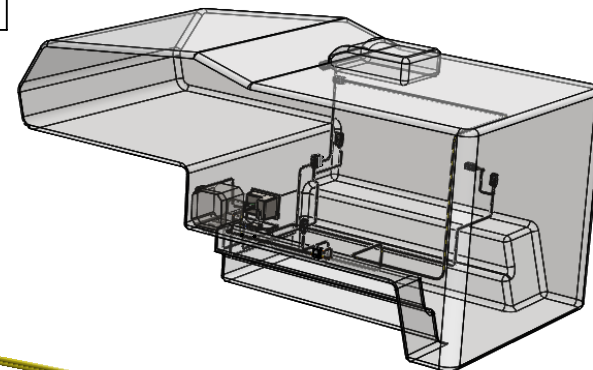


Circuit	Circuit 1	Circuit2	Circuit 3	Circuit 4	Circuit 5	Circuit 6
Breaker	30 Amp	15 Amp	15 Amp	15 Amp	15 Amp	20 Amp
Wire Ga.	10/2 NM	14/2 NM	14/2 NM	14/2 NM	14/2 NM	12/2 NM
Devices	Main	Converter	Dinette (GFCI)	Microwave	Wtr Heater	Air Conditioner
			Galley (GFCI)	TV		
			Outside Receptacle (GFCI)			
			Fridge Receptacle (GFCI)			

Northern Lite 9.6 120 VAC



Title: **Northern Lite 9.6 Typical 120VAC Electrical**

Company: **Northern Lite Mfg**

Reference #: **Owners Manual**

Rev #: **1**

Drawing by: **B. Paracholski**

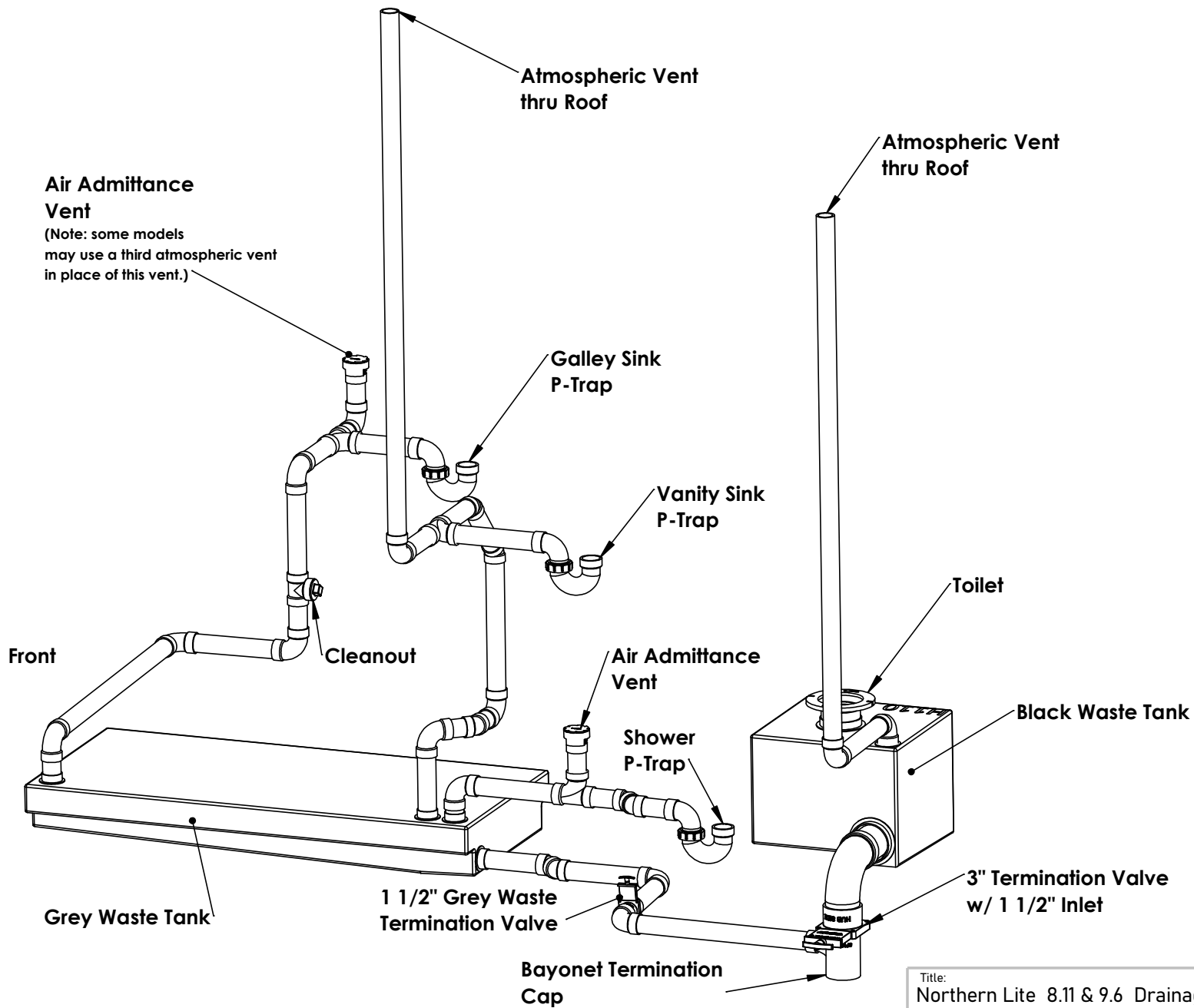
Verified by:

Page Size: **A**

Date: **2022-10-27**

Scale: **DNS**

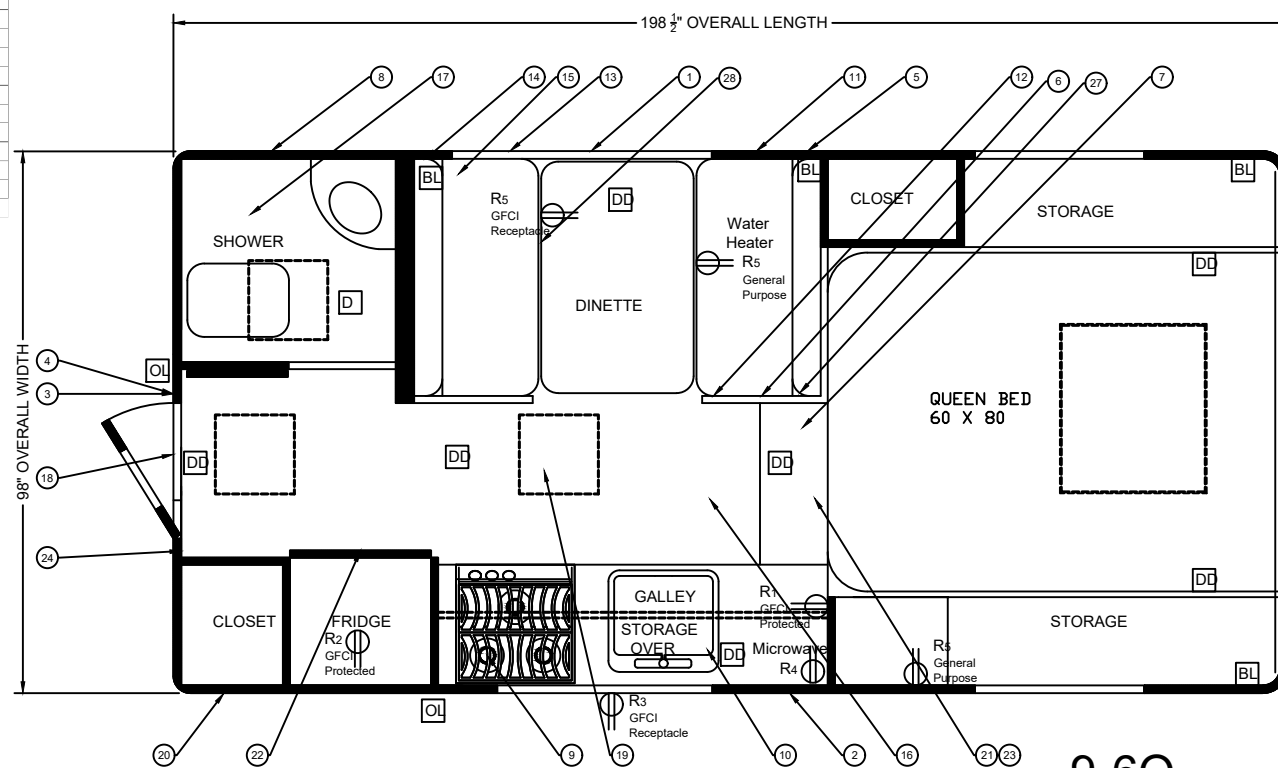
Sheet: **1**



Title: Northern Lite 8.11 & 9.6 Drainage/Waste/Venting (DWV)		
Company: Northern Lite Manufacturing	Reference #: Owners Manual	Rev #: 1
Drawing by: B. Paracholski		Verified by:
Page Size: A	Date: 2022-11-01	Scale: DNS Sheet: 1

INDEX	AMPERAGE	DESCRIPTION	CIRCUIT 1	Amps	CIRCUIT #2	Amps	CIRCUIT #3	Amps	CIRCUIT #4	Amps	CIRCUIT #5	Amps	CIRCUIT #6	Amps
D	0.2	SINGLE DOME	15 AMP		15 AMP		15 AMP		15 AMP		15 AMP		15 AMP	
DD	0.4	DOUBLE DOME												
OL	0.3	OUTSIDE LIGHT	14 Ga Brown		14 Ga. Brown		14 Ga Brown		14 Ga. Yellow		14 Ga. Brown		14 Ga Orange	
BL	0.2	BULLET LIGHT	Double Dome	0.40	Double Dome	0.40	Bullet Lt	0.20	Furnace	3.50	Single Dome	0.20	Stereo	2.10
F		FRIDGE	Range Hood	3.00	Double Dome	0.40	Bullet Lt	0.20			Single Dome	0.20	TV	2.30
FF	3.5	FURNACE FAN	Porch Lite	0.30	Double Dome	0.40	Bullet Lt	0.20			Powered Vent	3.00	LPG Detector	0.50
RH/RL	3	RANGE HOOD/LIGHT			Double Dome	0.40	Bullet Lt	0.20					CO Detector	0.50
PRV	3	POWER ROOF VENT			Double Dome	0.40	Bullet Lt	0.20						
FTF	3	FANTASTIC FAN			Double Dome	0.40	Dome	0.40						
WP	5	WATER PUMP			Porch Lite	0.30	RH/HL	3.20						
WH	0.5	WATER HEATER					Dome	0.40						
CO	0.5	CARBON MONOXIDE DETECTOR												
LPG	0.5	LPG DETECTOR												
A/C	0.5	Air Cond. Control Board												
JB		JUNCTION BOX												
T		THERMOSTAT		3.70		2.30		4.80		3.50		3.40		5.40
ST	2.1	STEREO												
TV	2	TELEVISION												
L1		14 GA. BLUE												
L2		14 GA. RED												
L3		14 GA. YELLOW												
L4		14 GA. BROWN												
L5		14 GA. ORANGE												
L6		14 GA. GREEN												
L7		14 GA. WHITE												
L8		14GA. PURPLE												
L9		14GA. BLACK												
L10		10GA. BLACK												
H1		14/2 NMD-90												
H2		12/2 NMD-90												
H3		10/2 NMD-90												
H4		10/3												
30A		30AMP BREAKER												

- Alternate Means of Egress
- LPG Compartment vented to Exterior Sealed to Interior
- CSA Insignia
- VIN # and Manufacturer Identification Plate
- Potable Water Inlet c/w label
- 12 volt Demand Water Pump
- Potable Water Tank
- 3" Termination c/w Cap
- Range Oven c/w Range Hood & Exhaust Fan
- Galley Sink
- Water Heater
- 120VAC & 12VDC Electrical Panels
- 3/4" City Water Connection c/w Cap
- 120VAC Power Cord
- LPG Furnace c/w 12V Fan
- Grey Waste Tank
- Black Waste Tank
- Primary Means of Egress
- 14" x 14" Vent Optional Roof Air conditioner
- Battery Compartment sealed to the Interior. Vented to Exterior
- CO Detector
- LPG Detector
- Smoke Detector
- Fire Extinguisher
- Exterior Shower
- Combustion Exhaust Location for, Fridge, Furnace, Water Heater
- Low Point Drain
- Furnace Return Air
- Galley GFCI Protected Receptacle
- Fridge Receptacle
- Outside GFI Protected Receptacle
- Microwave Receptacle
- General Purpose GFCI protected Receptacle

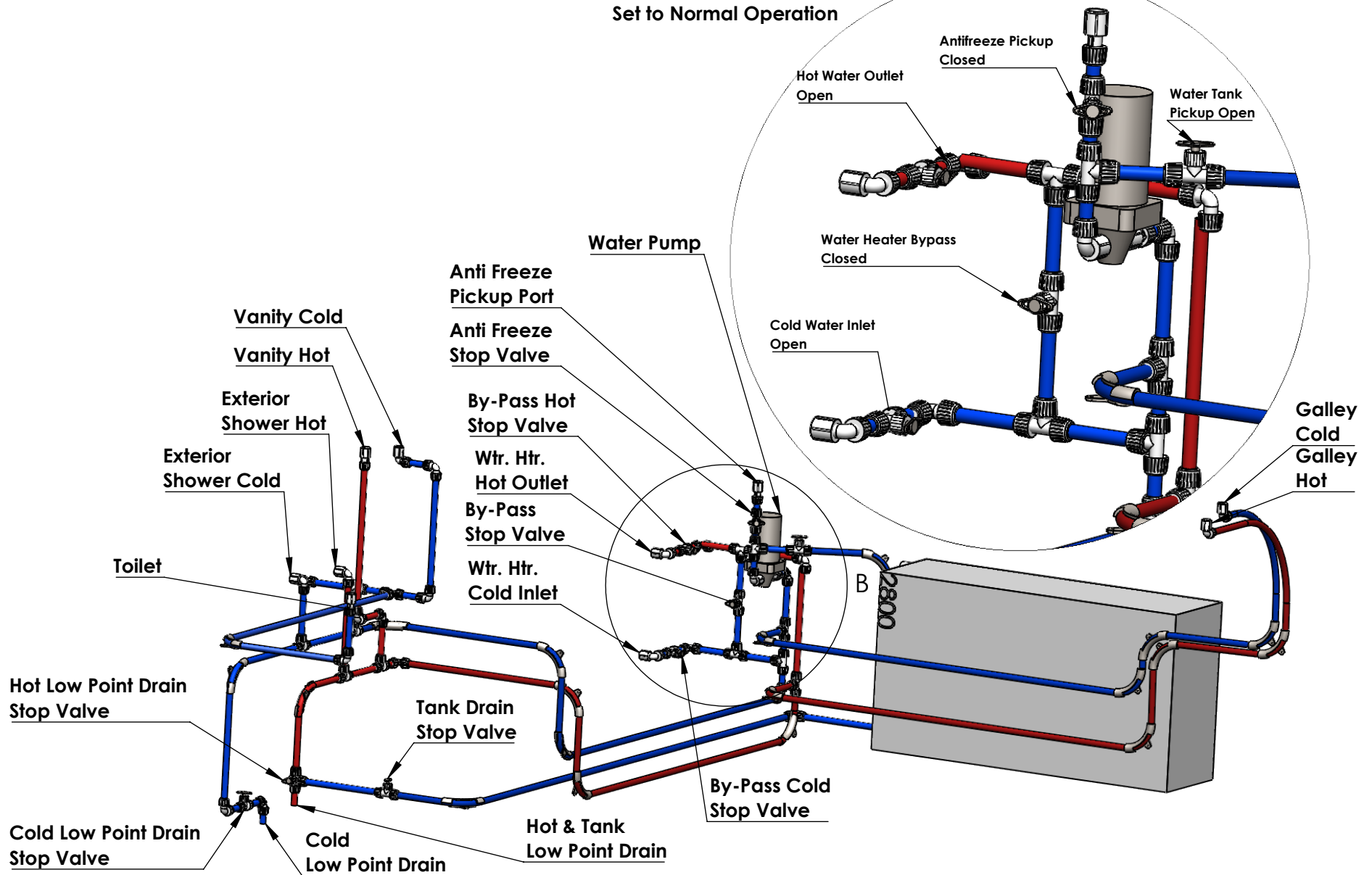


- Notes:
- All fuel burning appliances and their locations meet or exceed the requirements of CSA Z240 Series 14 (reaffirmed 2020)
 - LPG Storage Compartment is sealed from the the Inside of the Coach, and is vented to the exterior of the compartment. This compartment does not contain any spark producing devices.
 - The interior material of this compartment has a flame spread rating of not greater than 200.
 - All fixed appliances are grounded through the distribution panel, all others are grounded through the receptacle
 - All pipe is secured via Blocking and straps (Plumbing)
 - Waste tanks are basement mounted and are continuously supported along the length by means of wooden support trays

9-6Q

GENERAL NOTES	NO.	REVISION:	START	BY:	NO.	REVISION:	START	BY:	NO.	REVISION:	START	BY:	DRAWING STATUS:	START DATE:	DRAW DATE:	ASSEMBLY NO.
	1				4				7				Production		2022 Nov 14	
	2				5				8				DRAWN BY: Paracholski	CHECKED BY:	TITLE: NORTHERN LITE 9-6Q Owners Manual Plan 12volt	
	3				6				9				X-FILE:	REFERENCE:	REPLACED:	DRAWING NO. NL-0846

Water Heater Bypass Set to Normal Operation



Title: Northern Lite 8.11 & 9.6 Water Distribution System		
Company: Northern Lite Manufacturing	Reference #: Owners Manual	Rev #: 1
Drawing by: B. Paracholski	Verified by:	
Page Size: A	Date: 2022 - 11 -1	Scale:DNS Sheet: 1