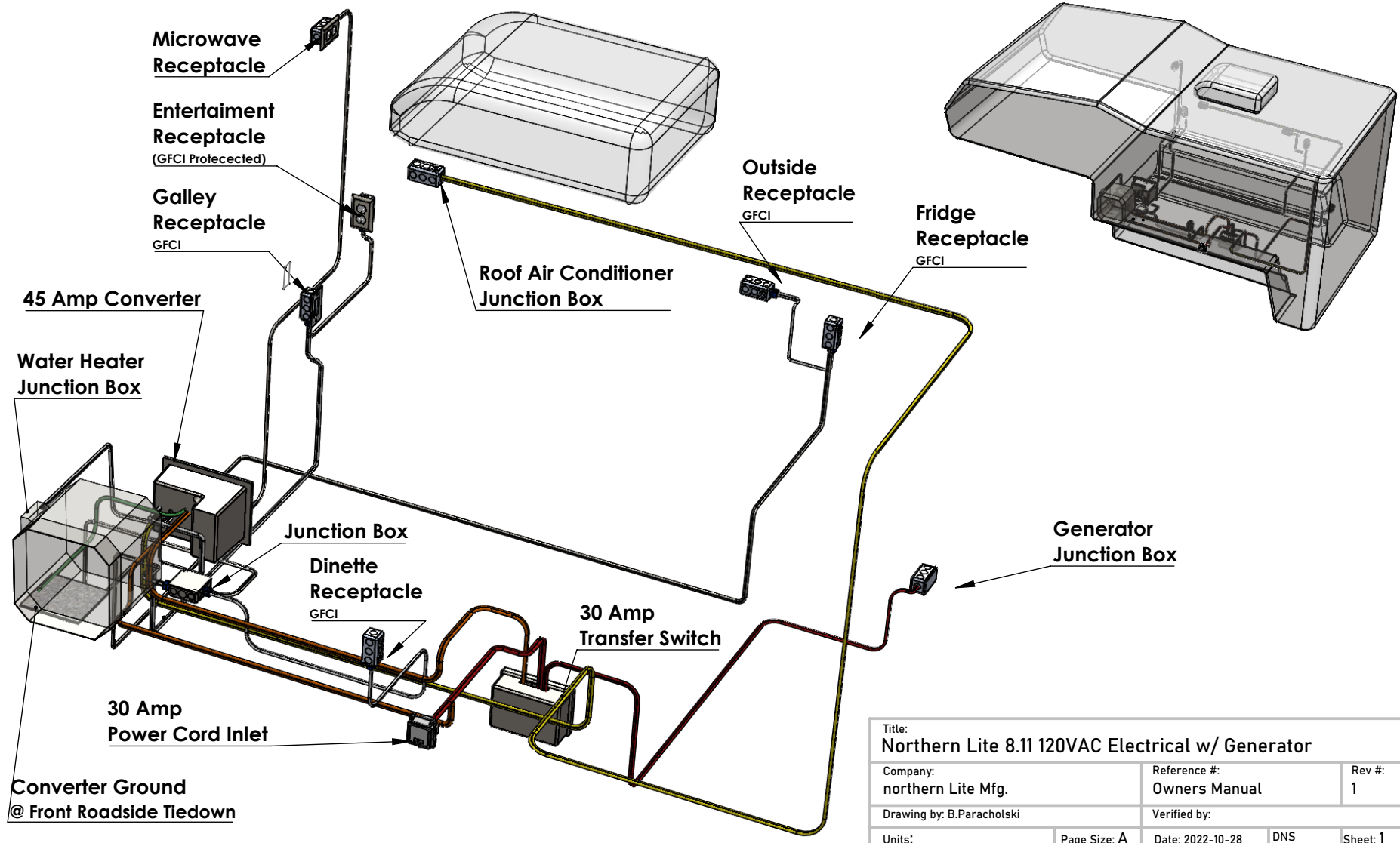


Title: Northern-Lite 8.11 Dry Bath Drainage/Waste/Venting (DWV)		
Company: Northern Lite Manufacturing	Reference #: Owners Manual	Rev #: 1
Drawing by: B. Paracholski		Verified by:
Page Size: A	Date: 2022-11-04	Scale: DNS Sheet: 1

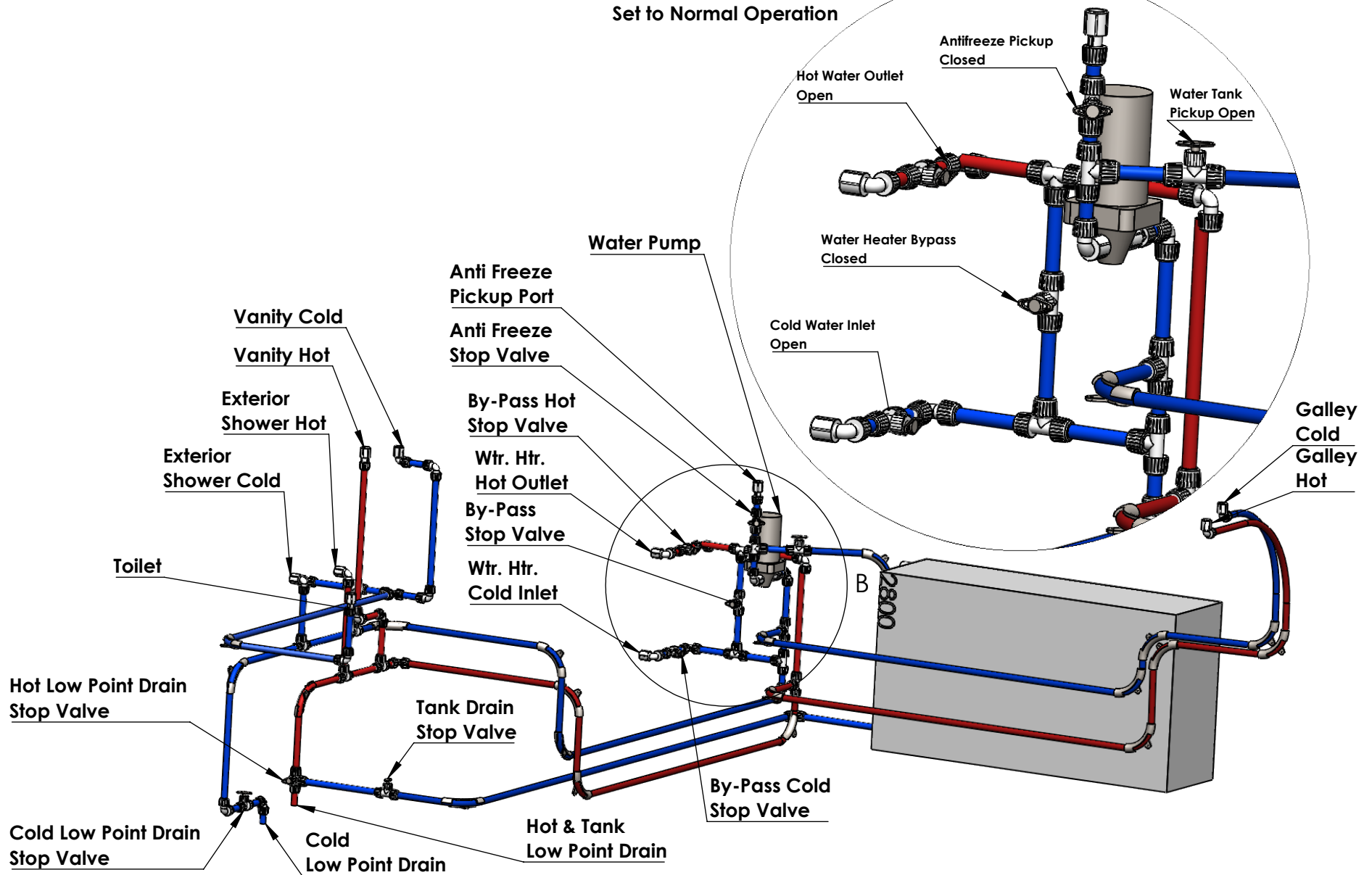
Circuit	Circuit 1	Circuit 2	Circuit 3	Circuit 4	Circuit 5	Circuit 6
Breaker	30 Amp	15 Amp	15 Amp	15 Amp	15 amp	20 Amp
Wire Ga.	10/2 NMD	14/2 NM	14/2 NM	14/2 NM	14/2 NM	12/2 NM
Devices	Main	Converter	Dinette (GFCI) Galley (GFCI) Fridge Receptacle (GFCI) Outside Receptacle (GFCI)	Microwave	Water Heater	Air Conditioner

**Northern Lite 8.11  
120 VAC w/Gen Prewire**



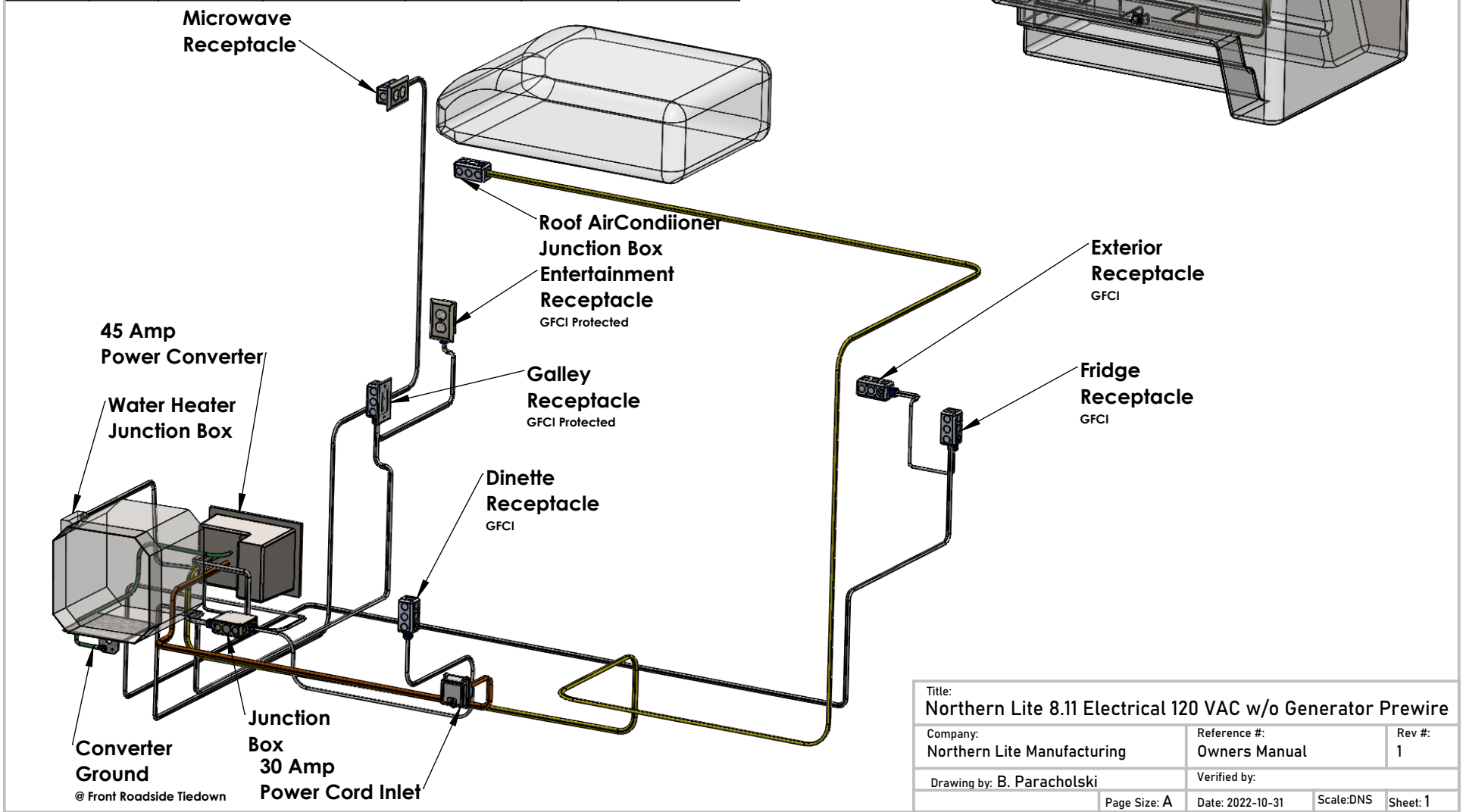
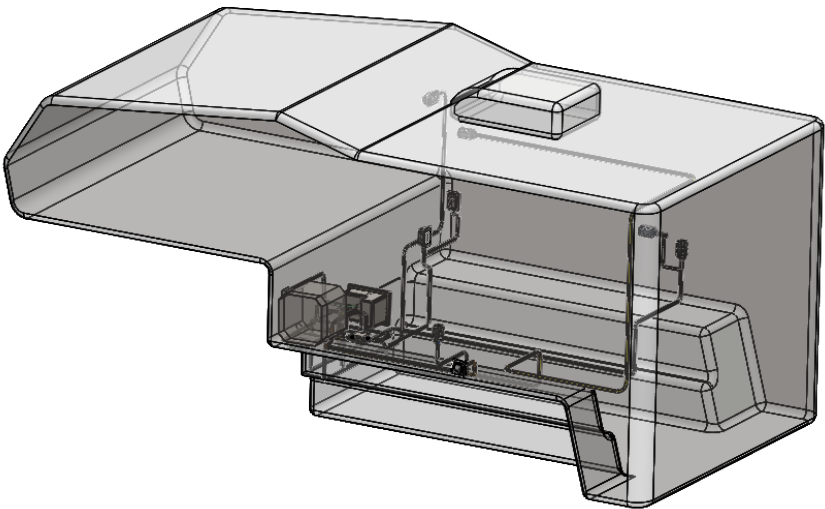
Title: Northern Lite 8.11 120VAC Electrical w/ Generator				
Company: northern Lite Mfg.		Reference #: Owners Manual		Rev #: 1
Drawing by: B.Paracholski		Verified by:		
Units:	Page Size: A	Date: 2022-10-28	DNS	Sheet: 1

# Water Heater Bypass Set to Normal Operation



Title: Northern Lite 8.11 & 9.6 Water Distribution System		
Company: Northern Lite Manufacturing	Reference #: Owners Manual	Rev #: 1
Drawing by: B. Paracholski	Verified by:	
Page Size: A	Date: 2022 - 11 -1	Scale:DNS Sheet: 1

Circuit	Circuit 1	Circuit 2	Circuit 3	Circuit 4	Circuit 5	Circuit 6
Breaker	30 Amp	15 amp	15 Amp	15 Amp	15 Amp	20 Amp
Wire Ga.	10/2 NM	14/2 NM	14/2 NM	14/2 NM	14/2 NM	12/2 NM
Devices	Main	Converter	Dinette Recept GFCI	Microwave Recept	Water Heater	Air Conditioner
			Galley Recept GFCI	TV		
			Fridge Recept GFCI			
			Exterior Recept GFCI			



Title: Northern Lite 8.11 Electrical 120 VAC w/o Generator Prewire		
Company: Northern Lite Manufacturing	Reference #: Owners Manual	Rev #: 1
Drawing by: B. Paracholski		Verified by:
Page Size: A	Date: 2022-10-31	Scale:DNS Sheet: 1