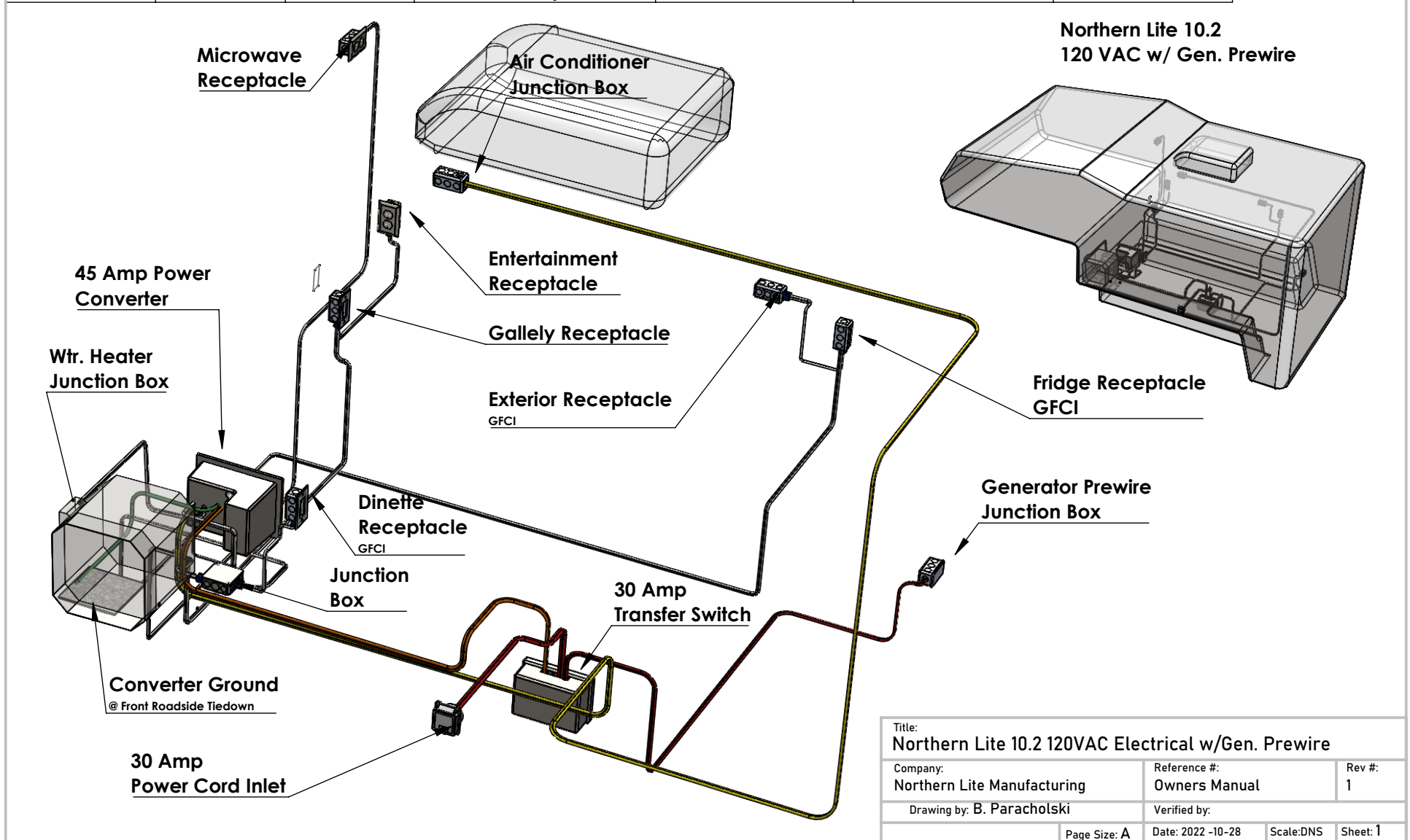
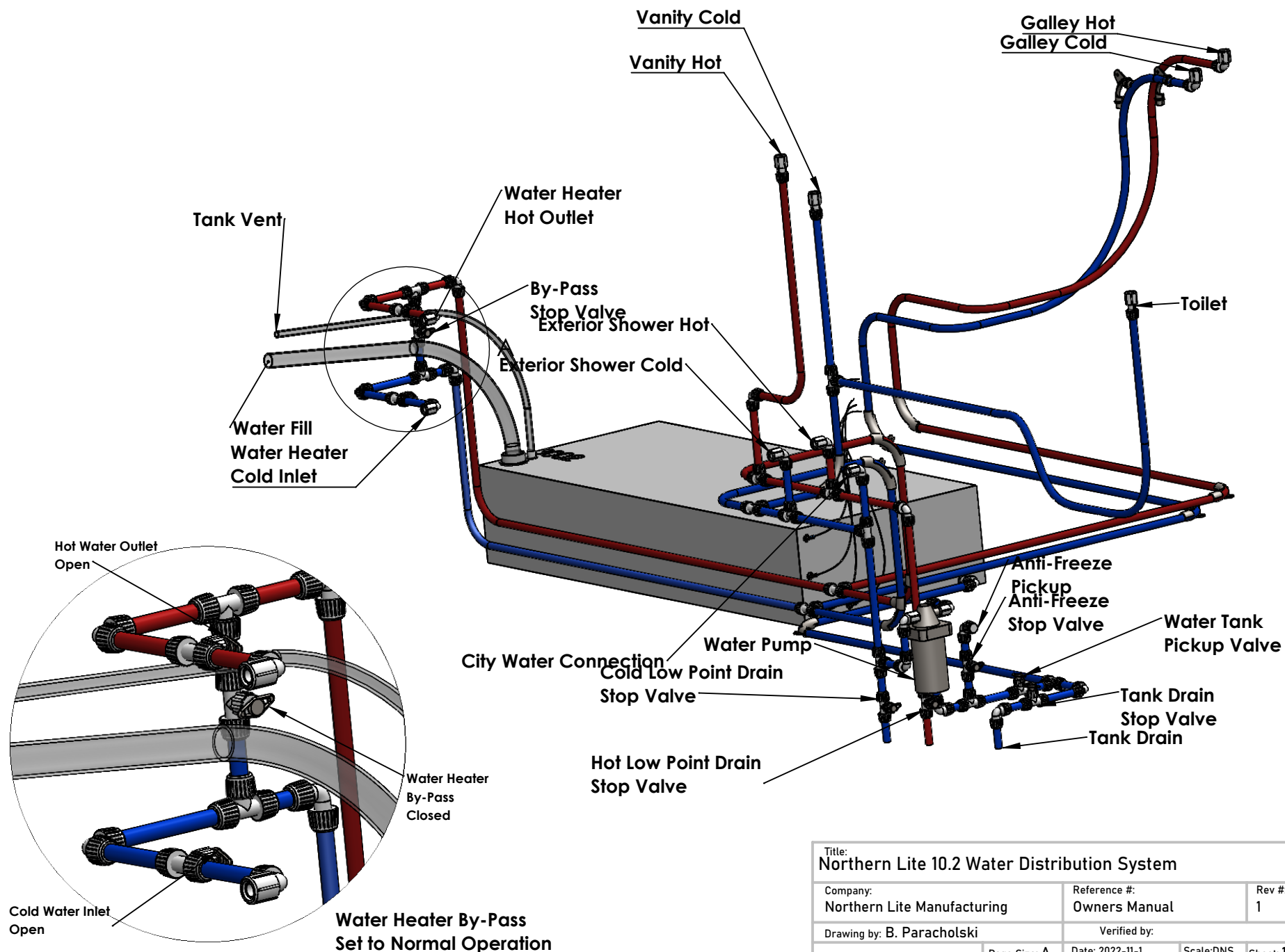
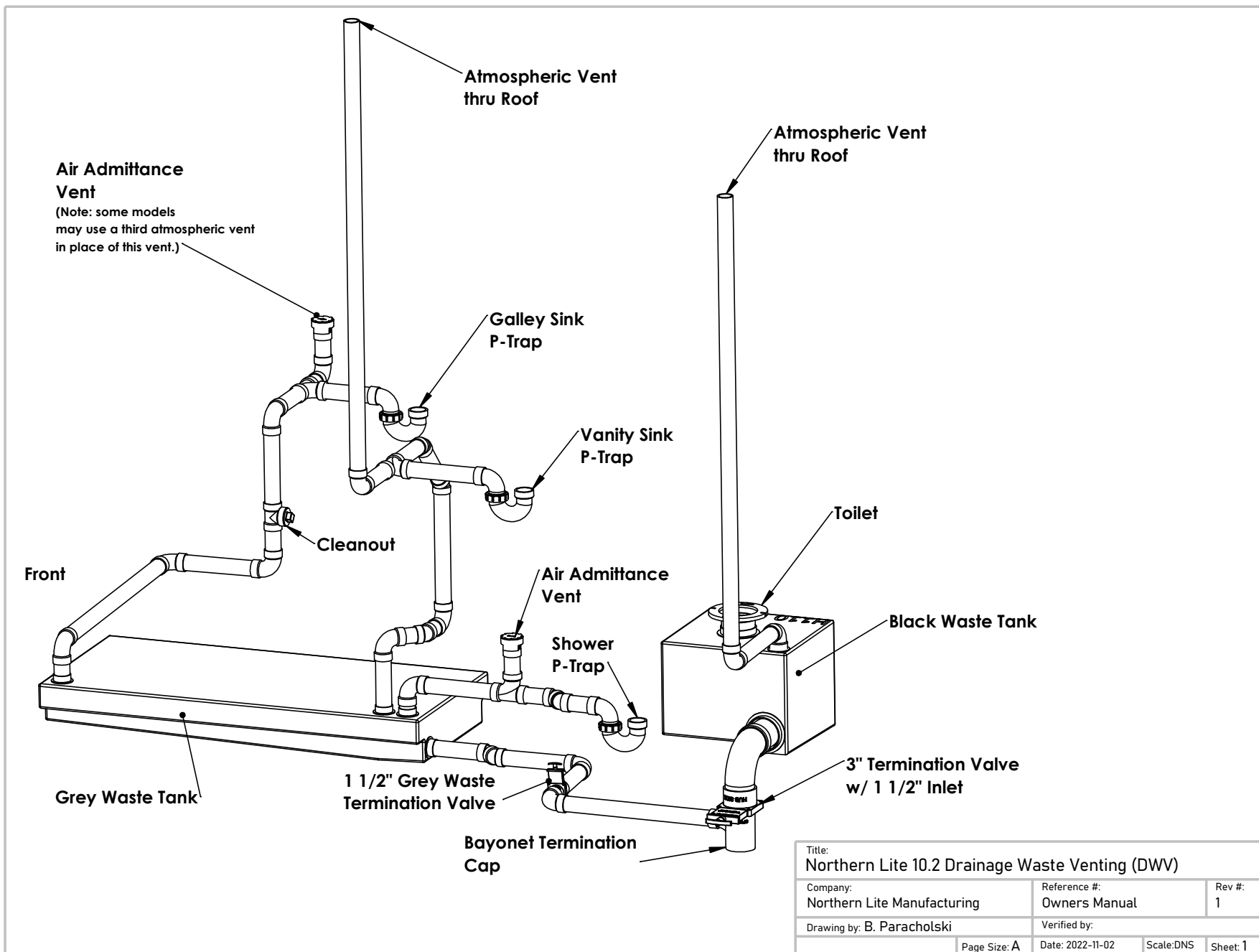


Circuit	Circuit 1	Circuit 2	Circuit 3	Circuit 4	Circuit 5	Circuit 6
Breaker	30 Amp	15 amp	15 Amp	15 Amp	15 Amp	20 Amp
Wire Ga.	10/2 NM	14/2 NM	14/2NM	14/2 NM	14/2 NM	12/2 NM
Devices	Main	Converter	Dinette Recept. (GFCI)	Microwave Recept	Wtr. Heater	Air Conditioner
			Galley Recept. GFCI	TV		
			Fridge Recept. GFCI			
			Exterior Recpt. GFCI			





Title: Northern Lite 10.2 Water Distribution System		
Company: Northern Lite Manufacturing	Reference #: Owners Manual	Rev #: 1
Drawing by: B. Paracholski	Verified by:	
Page Size: A	Date: 2022-11-1	Scale: DNS Sheet: 1



Title: Northern Lite 10.2 Drainage Waste Venting (DWV)		
Company: Northern Lite Manufacturing	Reference #: Owners Manual	Rev #: 1
Drawing by: B. Paracholski		Verified by:
Page Size: A	Date: 2022-11-02	Scale: DNS Sheet: 1

CIRCUIT 1 15 AMP	Amps	CIRCUIT #2 15 AMP	Amps	CIRCUIT #3 15 AMP	Amps	CIRCUIT #4 15 AMP	Amps	CIRCUIT #5 15 AMP	Amps	CIRCUIT #6 15 AMP	Amps
14 Ga Brown		14 Ga. Brown		14 Ga Brown		14 Ga. Yellow		14 Ga. Brown		14 Ga Orange	
Double Dome	0.40	Double Dome	0.40	Bullet Lt	0.20	Furnace	7.50	Single Dome	0.20	Stereo	1.00
Range Hood	3.00	Double Dome	0.40	Bullet Lt	0.20			Single Dome	0.20	TV	2.30
Porch Lite	0.30	Double Dome	0.40	Bullet Lt	0.20			Powered Vent	3.00	LPG Detector	0.50
		Double Dome	0.40	Bullet Lt	0.20					CO Detector	0.50
		Double Dome	0.40	Dome	1.44						
		Double Dome	0.40	RH/HL	3.20						
		Porch Lite	0.30	Dome	1.44						
	3.70		2.70		6.88		7.50		3.40		4.30

- 1 Alternate Means of Egress
- 2 LPG Compartment vented to Exterior Sealed to Interior
- 3 CSA Insingia
- 4 VIN # and Manufacturer Identification Plate
- 5 Potable Water Inlet c/w label
- 6 12 volt Demand Water Pump
- 7 Potable Water Tank
- 8 3" Termination c/w Cap
- 9 Range Oven c/w Range Hood & Exhaust Fan
- 10 Galley Sink
- 11 Water Heater
- 12 120VAC & 12VDC Electrical Panels
- 13 3/4" City Water Connection c/w Cap
- 14 120VAC Power Cord
- 15 LPG Furnace c/w 12" Fan
- 16 Grey Waste Tank
- 17 Black Waste Tank
- 18 Primary Means of Egress
- 19 14" x 14" Vent Optional Roof Air conditioner
- 20 Battery Compartment sealed to the Interior, Vented to Exterior
- 21 CO Detector
- 22 LPG Detector
- 23 Smoke Detector
- 24 Fire Extinguisher
- 25 Exterior Shower
- 26 Combustion Exhaust Location for, Fridge, Furnace, Water Heater
- 27 Low Point Drain
- 28 Furnace Return Air
- R1 Galley GFCI Protected Receptacle
- R2 Fridge Receptacle
- R3 Outside GFI Protected Receptacle
- R4 Microwave Receptacle
- R5 General Purpose GFCI protected Receptacle



NO.	REVISION:	START	BY:	NO.	REVISION:	START	BY:	NO.	REVISION:	START	BY:	DRAWING STATUS:		START DATE:	DRAW DATE:	ASSEMBLY NO.
1				4				7				Production		2021	JULY	
2				5				8				DRAWN BY: Paracholski	CHECKED BY:	TITLE: NORTHERN LITE 10-2EX WET BATH Owners Manual 12volt Circuits		
3				6				9				X-FILE:		REFERENCE:	REPLACED:	DRAWING NO. NL-0852